



*The product described in the instructions was developed, produced and checked considering the necessary safety requirements.
In order to ensure a proper and safe function and to rule out danger for persons and objects, this product must be installed appropriately.
Only trained, qualified staff, having the necessary technical experience and tools, should perform the installation.
Therefore you have to read and completely understand these instructions.
Check the content of the parts supplied as detailed next page prior to assembly.*

Included in delivery:

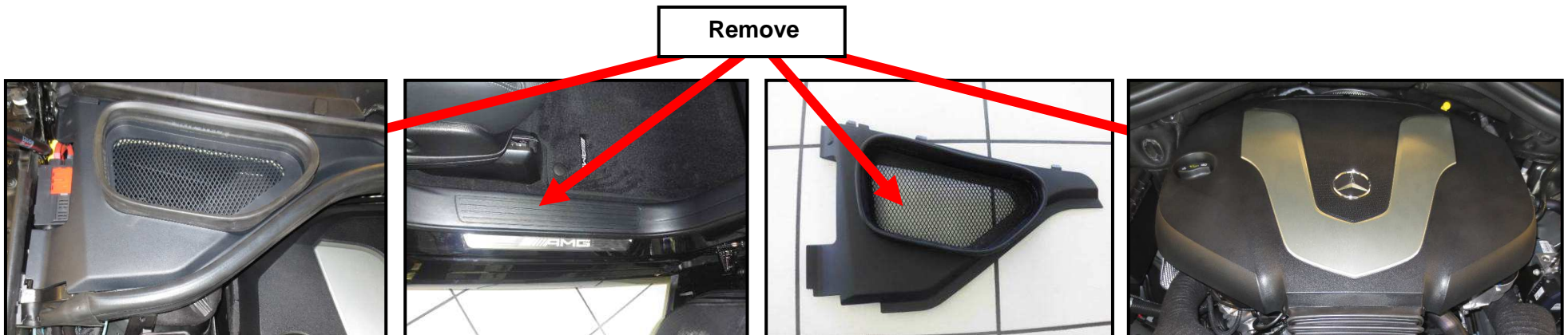
1x Control unit PowerXtra	002-636-10
1x Wiring harness	000-736-05-01-LS
1x „Brabus“-typing	211-000-14
1x Set „powered by“	000-000-30
1x Type approval	
1x Installation instructions	

Preparation:

Remove the right lower dashboard cover and the entrance panel on the passenger side in order to get access to the white CAN distributor.

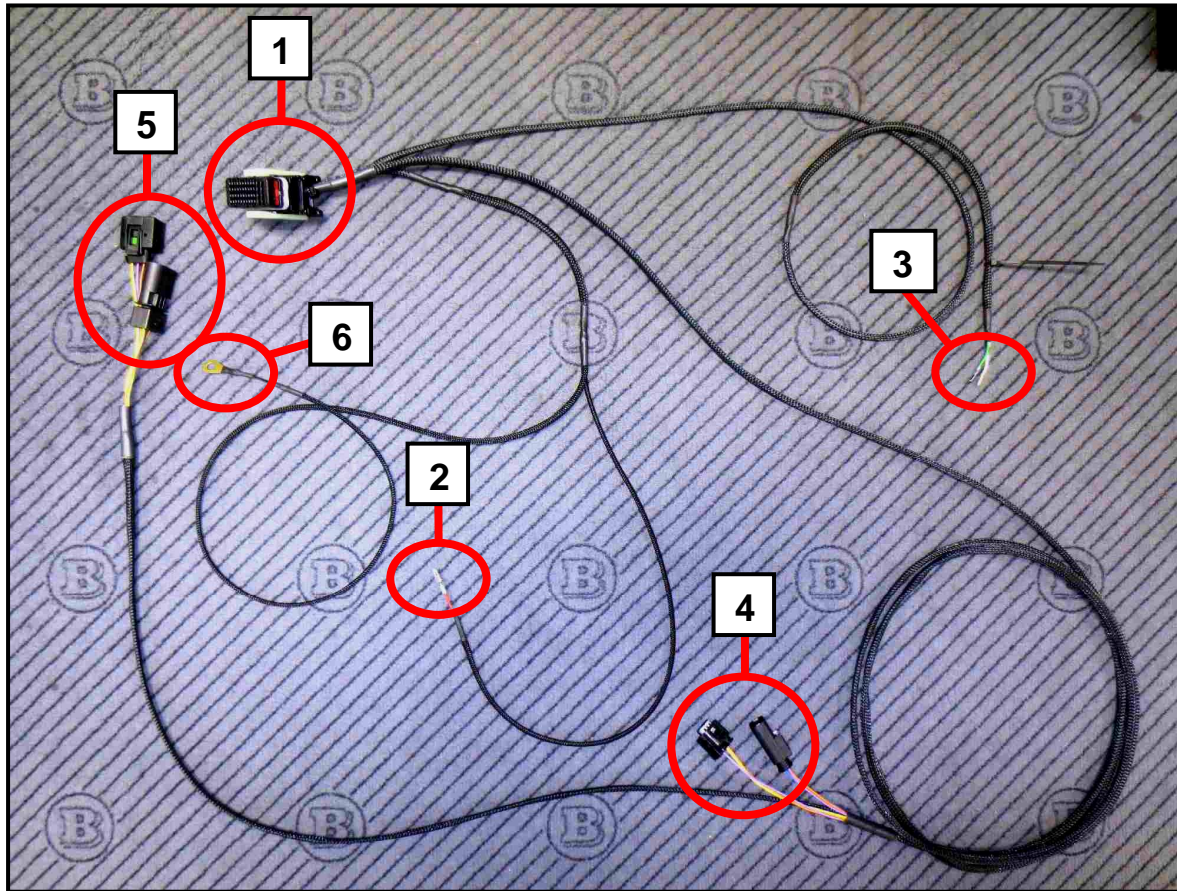
Remove the plastic covers shown and open the fuse and relay box within the engine bay. Loosen the front SAM.

2



Overview of electrical connections to be established:

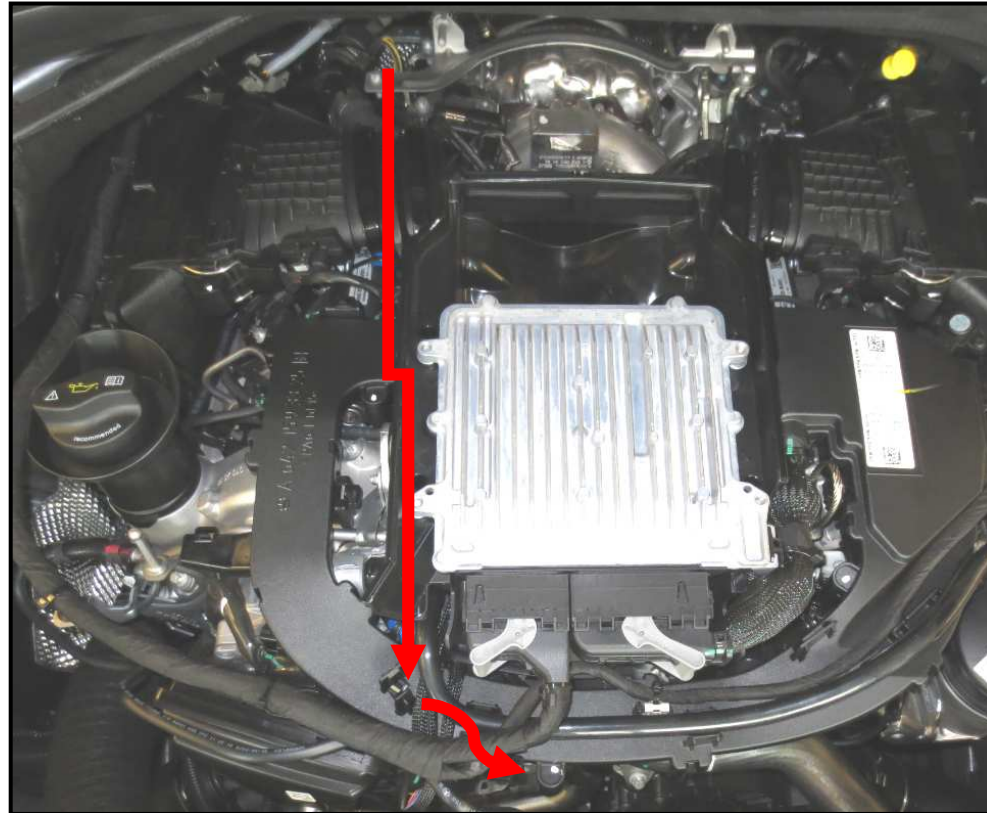
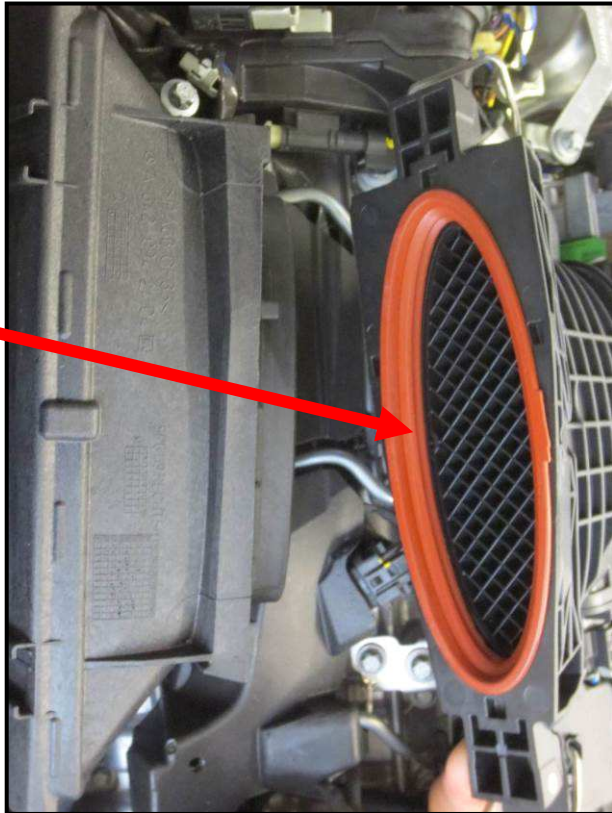
- 1- PowerXtra-main plug
- 2- Power supply (red wire to fuse and relay box within engine bay)
- 3- CAN- connector (to white CAN distributor within engine bay)
- 4- Boost pressure connector
- 5- Rail pressure connector
- 6- Ground ring lug



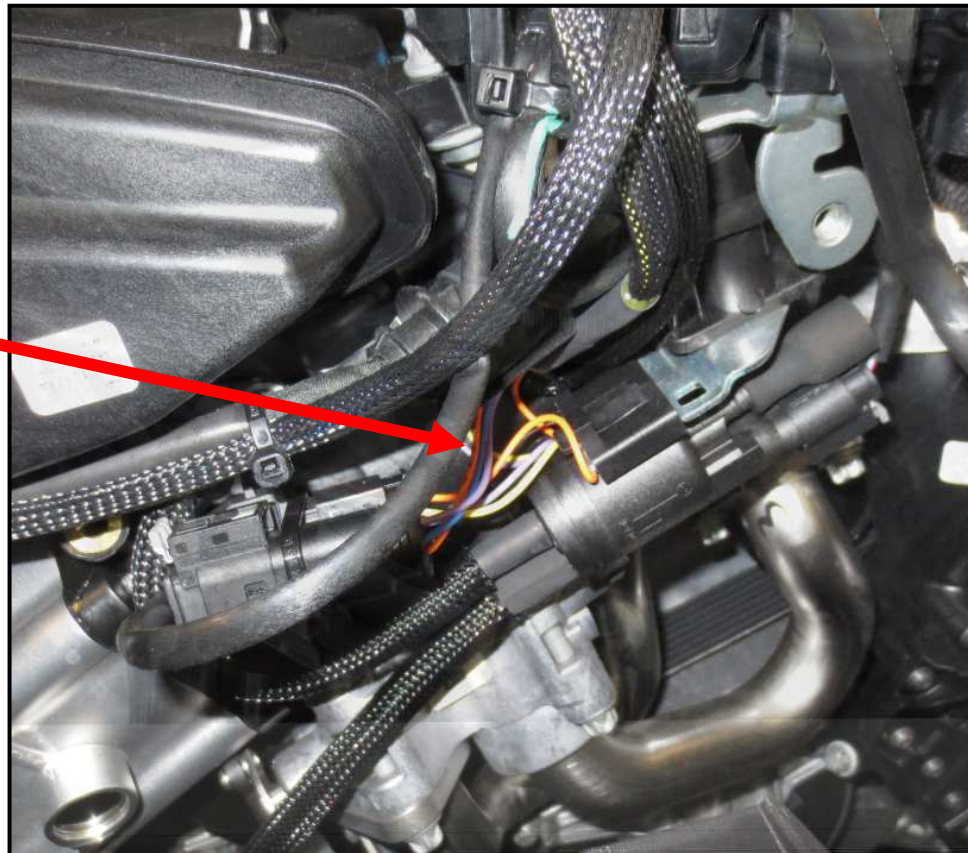
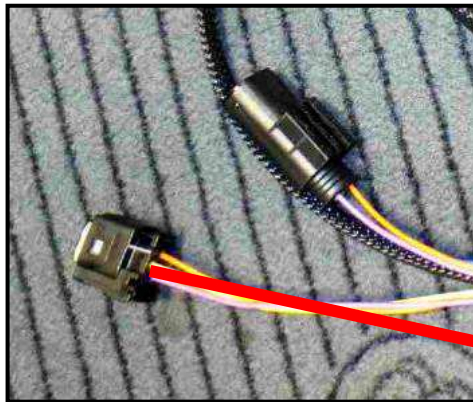
Connect standard plug of rail pressure sensor to Brabus socket, connect Brabus plug to rail pressure sensor.



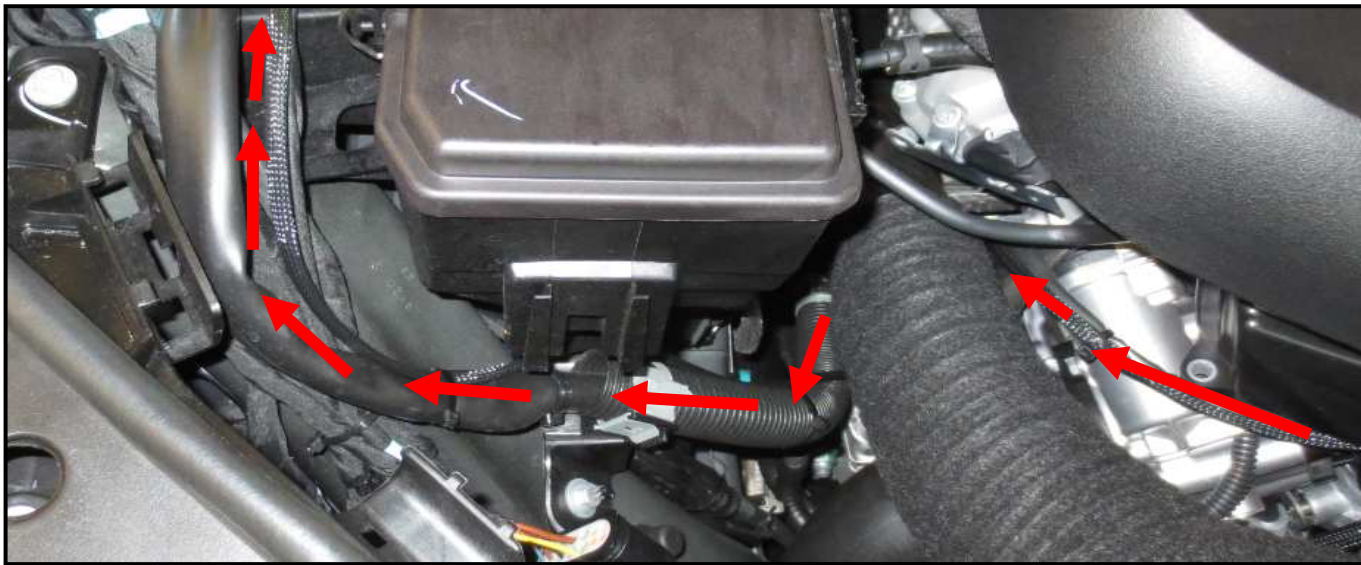
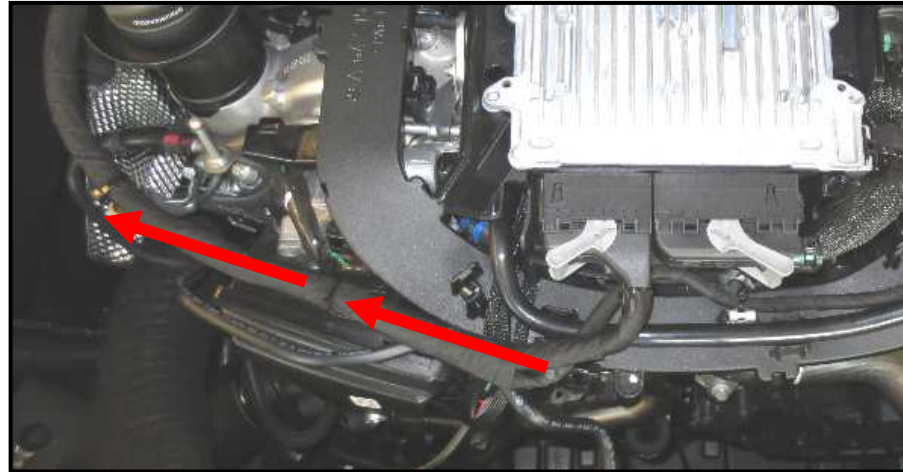
**Route wiring harness to charge pressure sensor. Disassemble air flow and route the wire below it.
Make sure the sealing is correctly fitted when re-assembling air flow!**



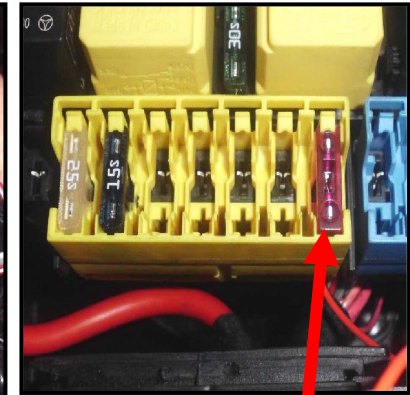
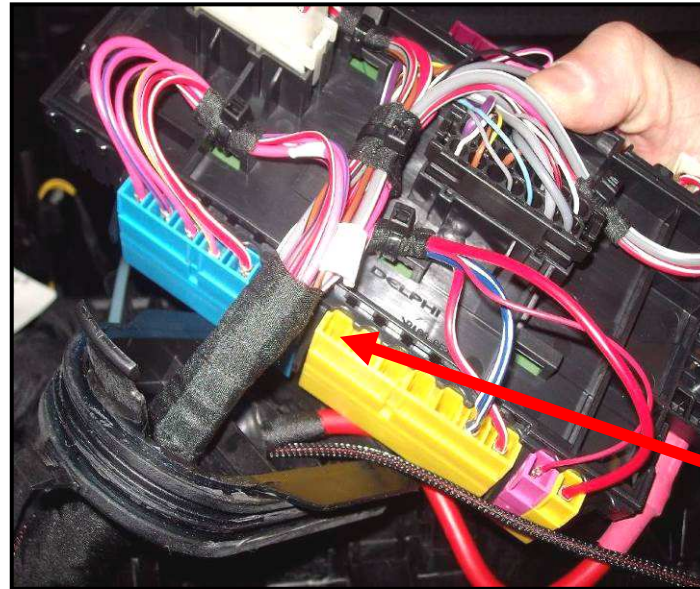
*Connect standard plug of boost pressure sensor to Brabus socket,
connect Brabus plug to boost pressure sensor.*



*Route wiring harness to the passenger side and to the front fuse and relay box.
Fixate to standard wiring loom shown using cable ties.*

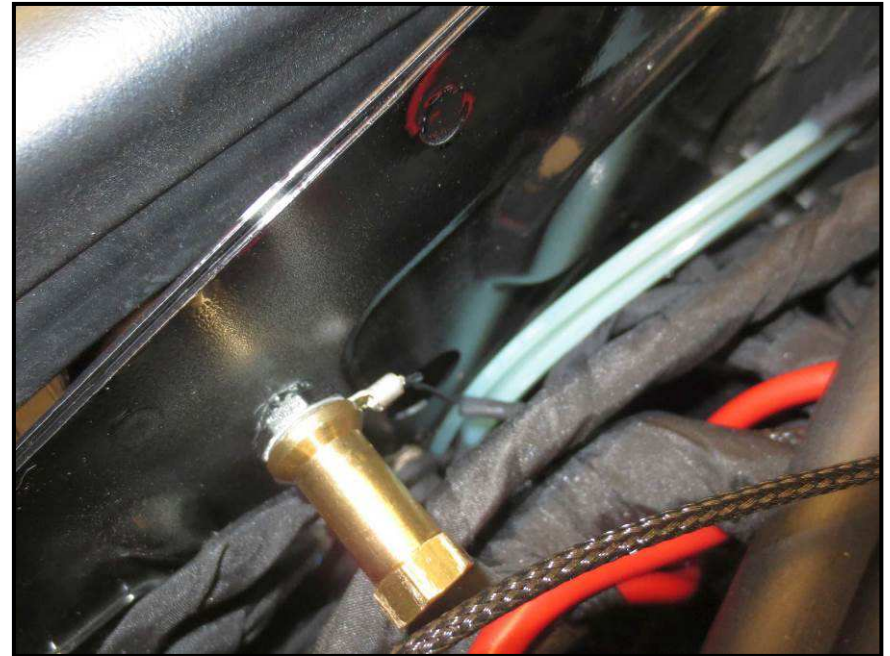


Carefully cut the rubber grommet shown and route the power supply wire through the rubber grommet into fuse and relay box. Attach the power supply wire to the free slot shown. Do not yet attach the fuse to the fuse bracket!

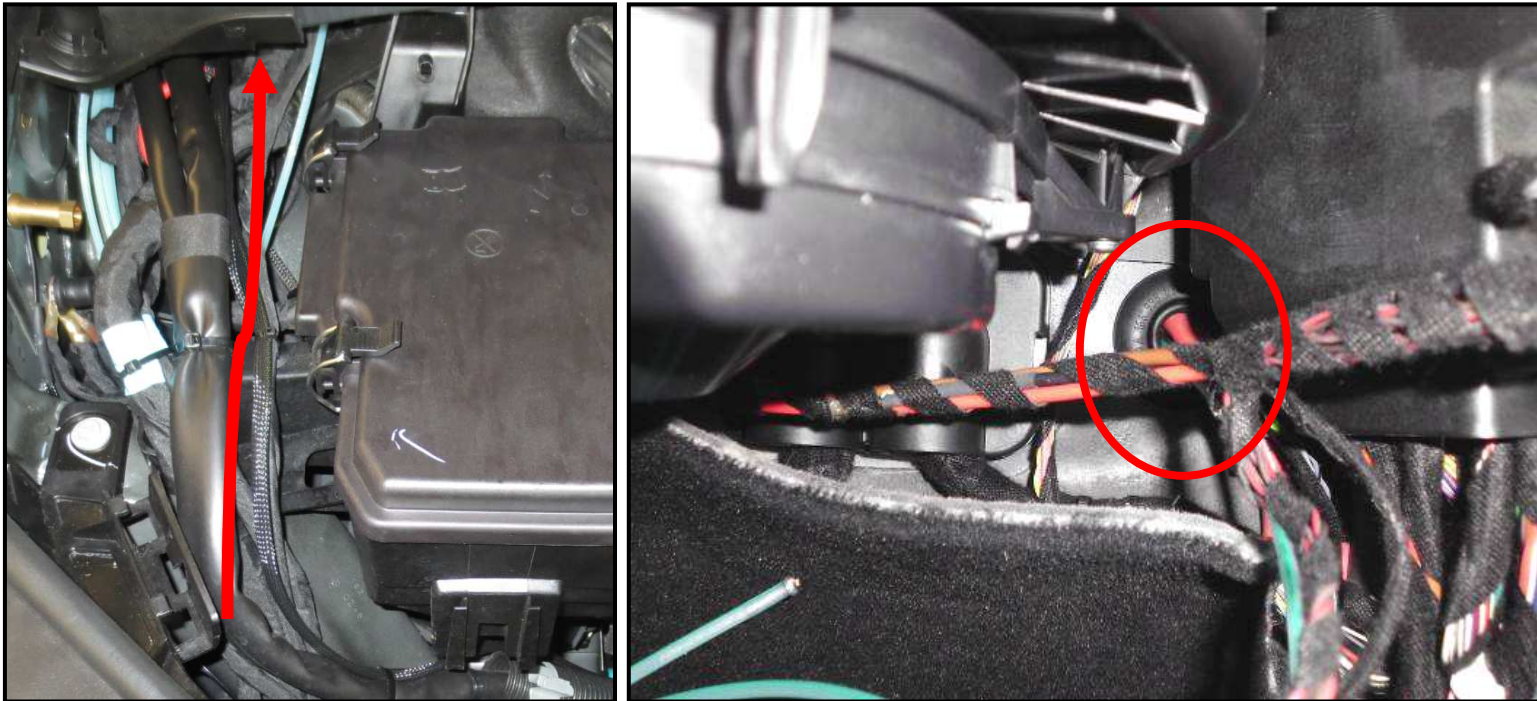


5 Amp fuse

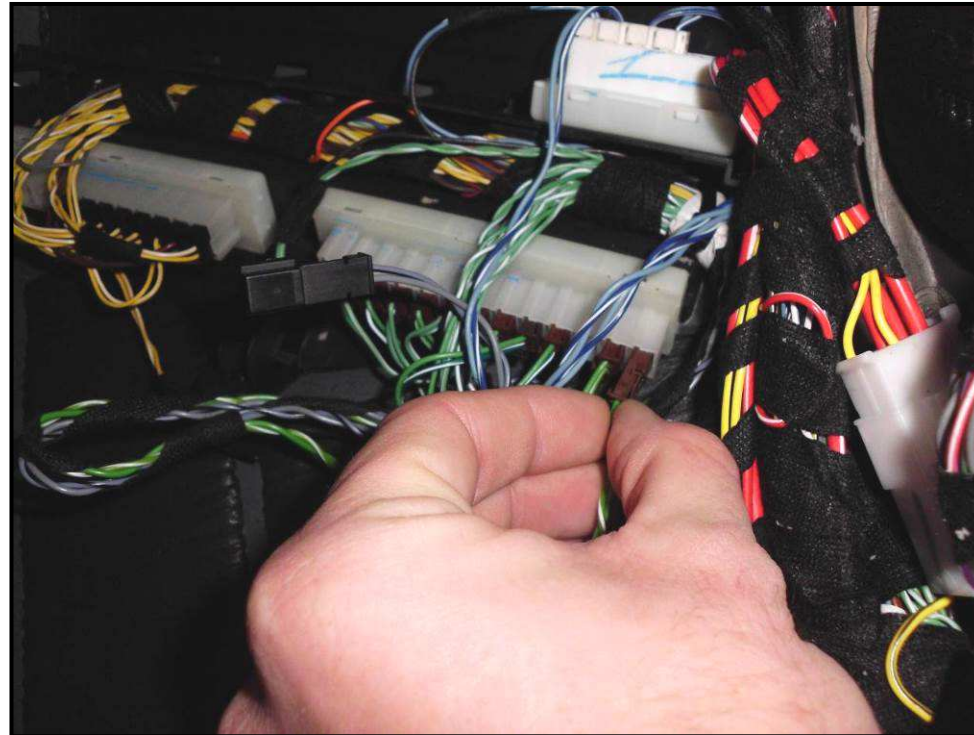
Bolt ground ring lug to ground terminal (right side within engine bay) shown.



*Route wiring harness to rubber grommet within engine bay shown.
Carefully cut rubber grommet and route CAN wires of the performance-kit harness into the car (using a litz wire). Seal implementation after routing wires through.*



Attach CAN wires to 2-pole plug supplied (take care for correct polarity), attach plug to a free port of white CAN distributor shown. If all slots are used already solder wires parallel to wires of one plug which is attached to the distributor.



Re-attach air flow, attach main plug to PowerXtra control unit, fixate PowerXtra control unit to air flow according to image.



*Attach 5 Amp fuse to fuse bracket within fuse and relay box and re-attach all trim parts.
Make sure all connections were properly made and wires were securely routed.*

Check and clear fault store, perform test-drive.