

**Brabus SoundXtra for Mercedes-Benz GL350 BT
X166-670-SX**



*The product described in the instructions was developed, produced and checked considering the necessary safety requirements.
In order to ensure a proper and safe function and to rule out danger for persons and objects, this product must be installed appropriately.
Only trained, qualified staff, having the necessary technical experience and tools, should make the installation.
Therefore you have to read and completely understand these instructions.
Before you start please check the content of the supplied parts as detailed below.*

Perform the disassembly/ assembly of standard components according to Mercedes-Benz workshop instructions.

Youtube-Link: <https://www.youtube.com/watch?v=N22Nt0oy64U>



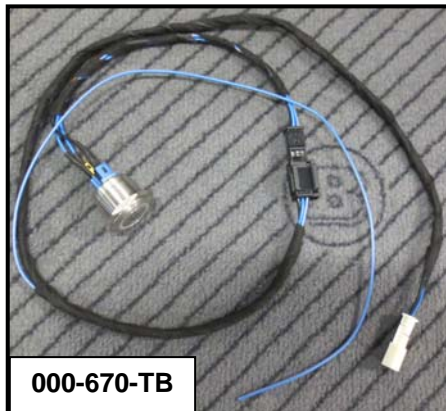
Included in delivery of Brabus SoundXtra:

1x	Brabus Sound module	166-670-AK
1x	SoundXtra control unit	000-670-SG
1x	Sound modul wiring harness	000-680-00
1x	SoundXtra operating button	000-670-TB
1x	Washer for button assembly	000-670-TR
1x	Lock washer M6	WU3946
1x	Fuse 10Amps	WU731010

2



000-680-00



000-670-TB



166-670-AK

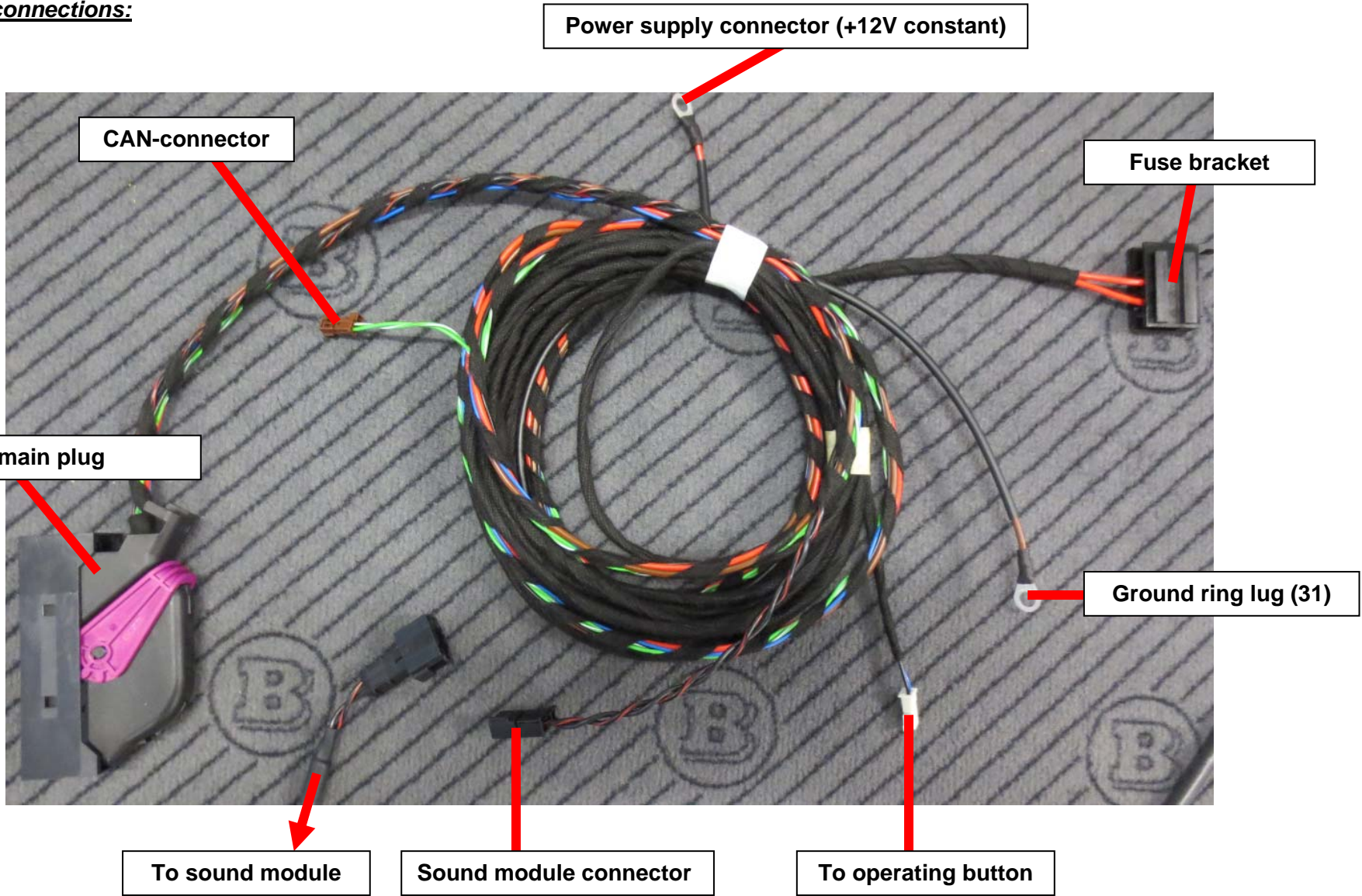


000-670-SG



Electrical connections:

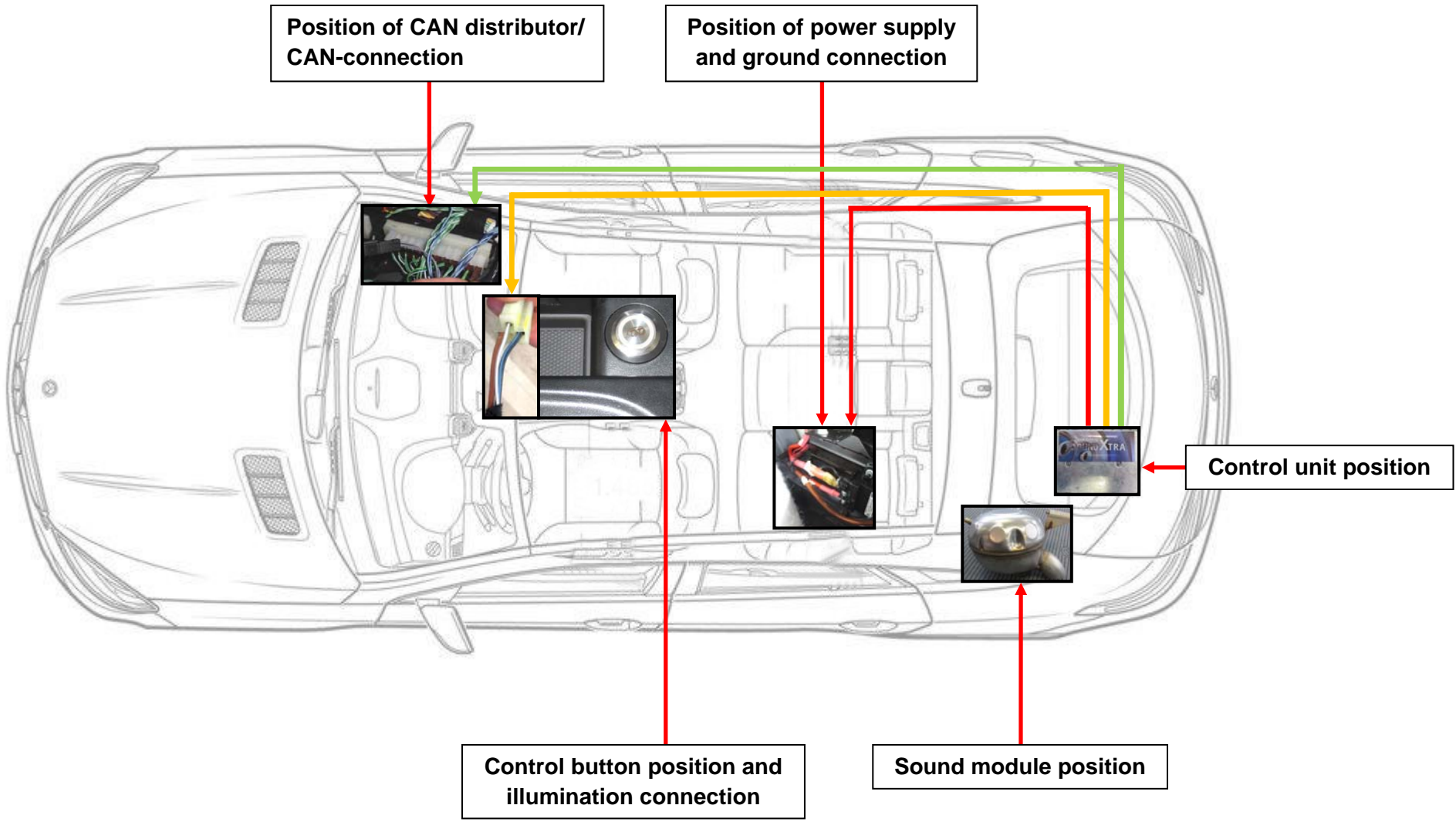
3





Laying of wiring harness

4

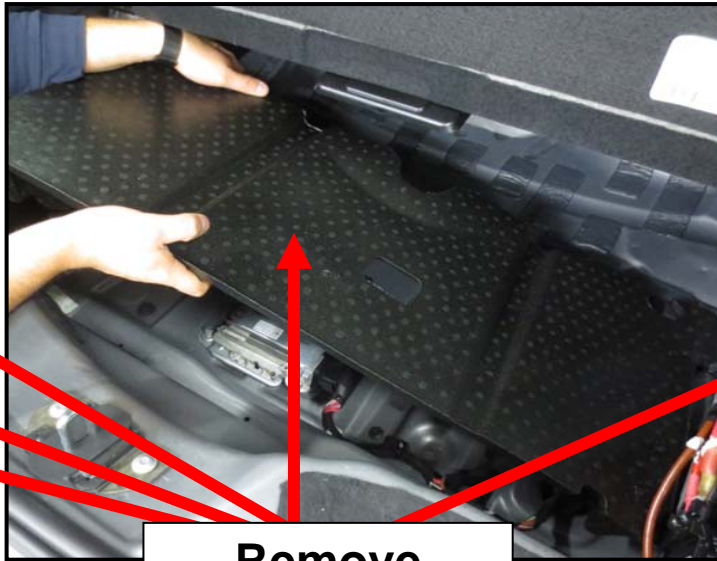
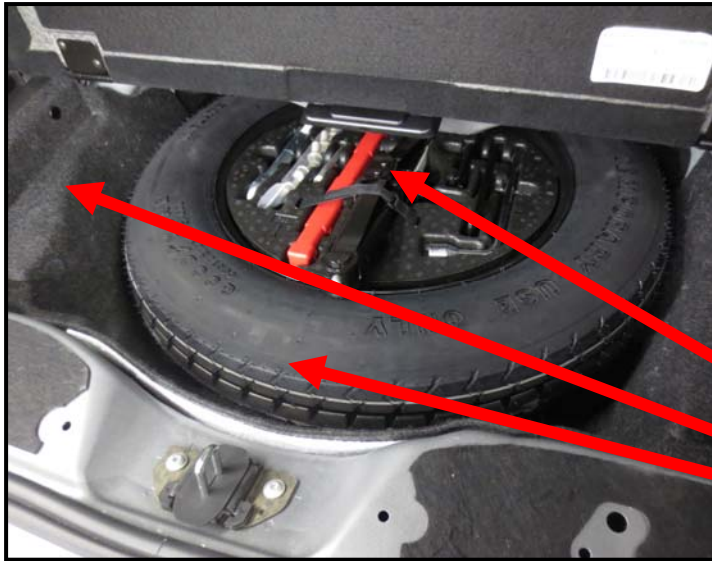




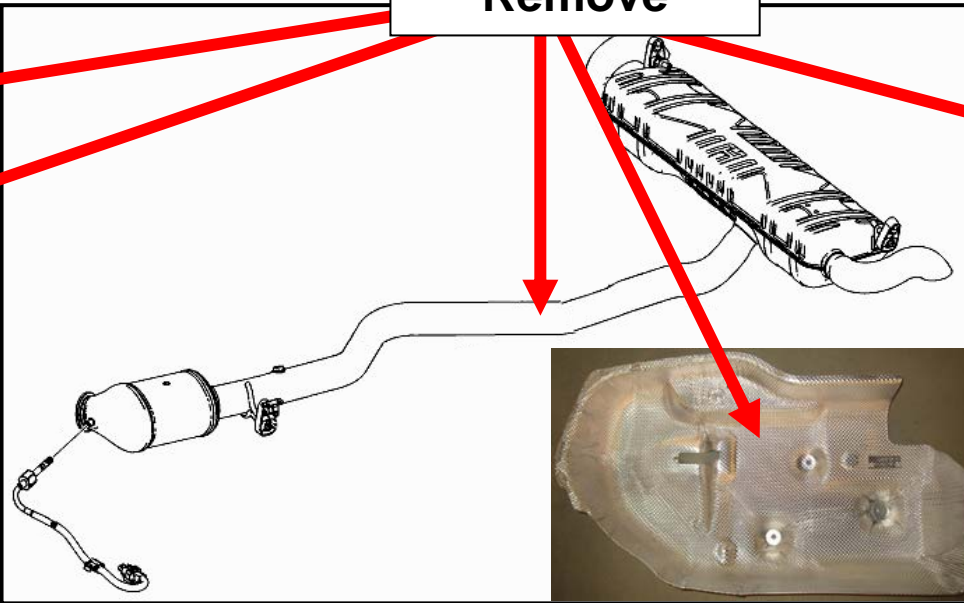
Preparation:

- Open the floor lid within the boot compartment.
- Loosen and remove the spare wheel.
- Loosen and remove the trims and the insulation below the floor lid.
- Loosen and remove the right side plastic entrance panels.
- Turn down the back seats, loosen and remove the left & right sidewall trim within the boot compartment.
- Remove the right lower dashboard cover.
- Remove the center console.
- Remove the exhaust system and the heat shield above the rear silencer.

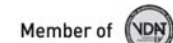
5



Remove



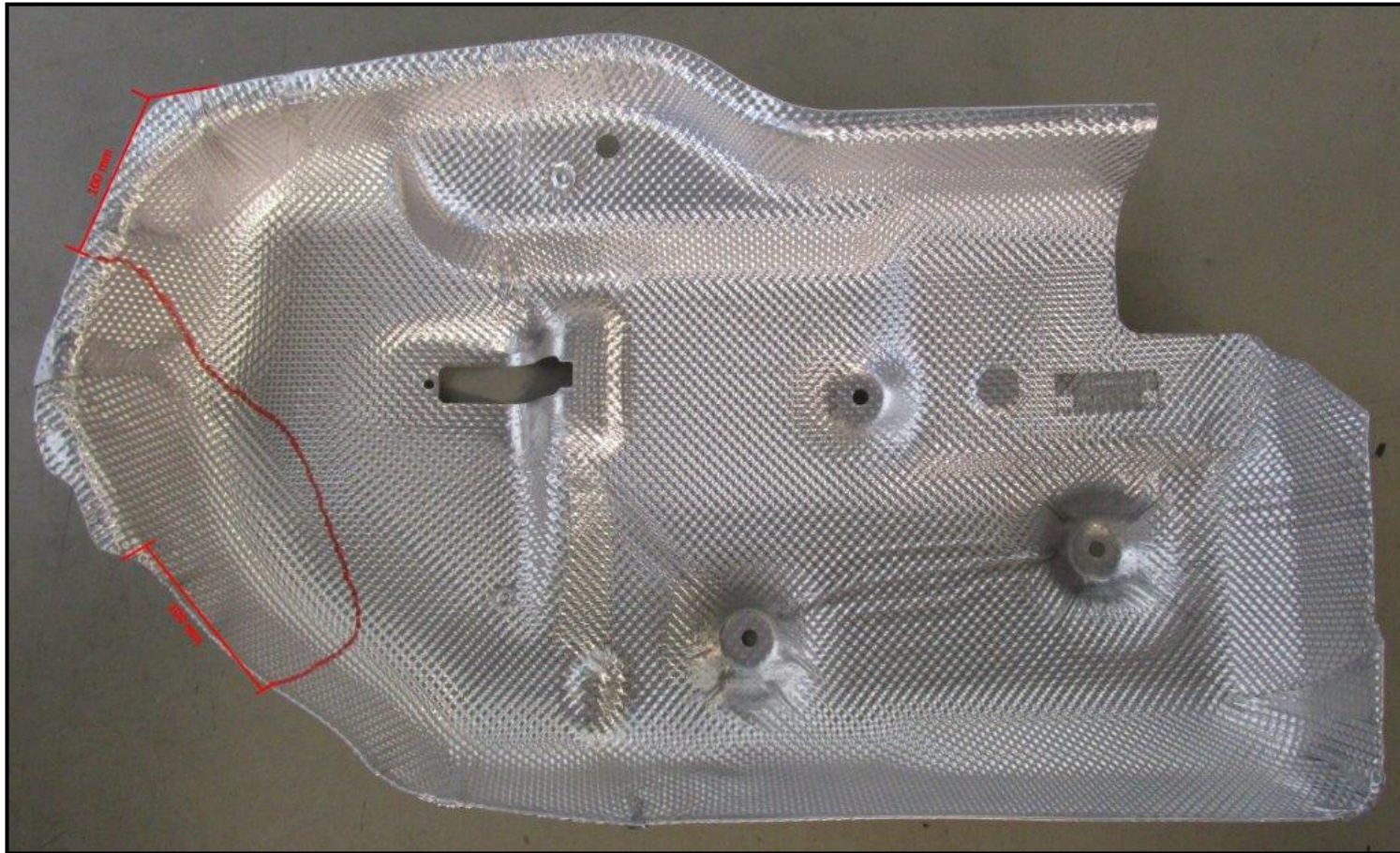
Official technology-partners





- Print the template on the last page (take care for correct control measures) and cut it out. Lay the template to the heat shield according to illustration and mark the outer edges to of the cutting template to it. Cut the heat shield using a suitable tool (wear protective equipment).

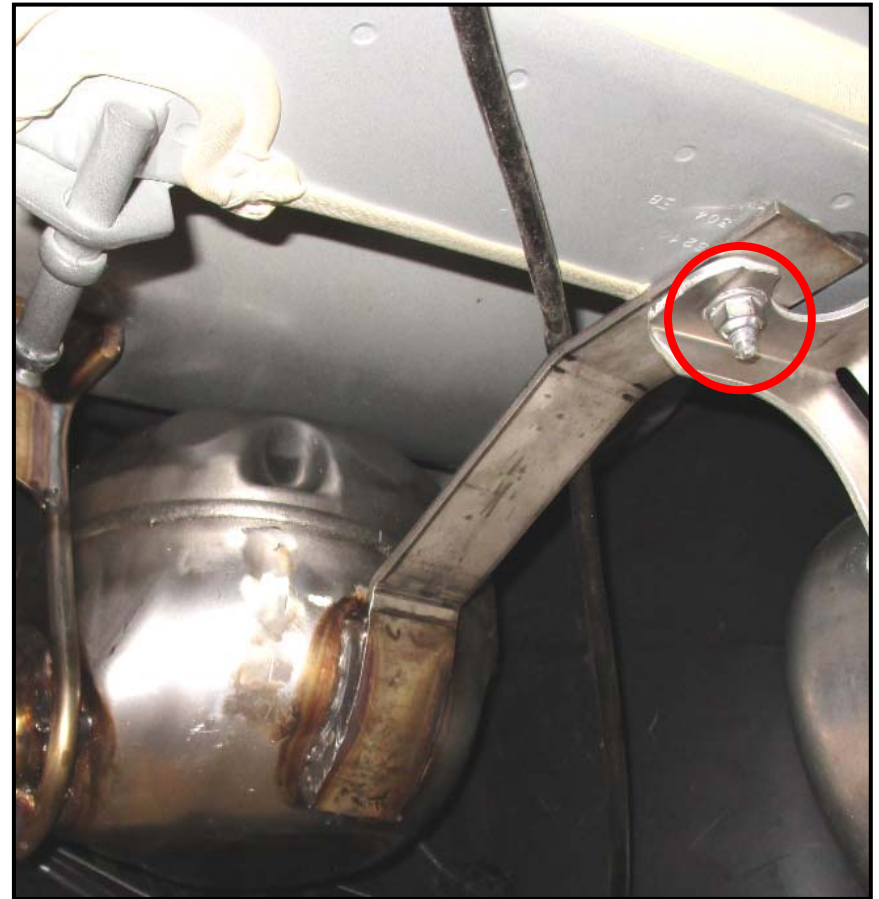
7





- Bolt the sound module to the standard fixation areas below the vehicle (above bracket of pressure reservoir) using bolts supplied and the standard bolt.

8





- Remove the rubber grommet shown on the vehicle underbody. Route the wire for the sound module out of the vehicle. Cut a small hole into the rubber grommet and route the wire for the sound module through it. Attach the grommet back to the vehicle.
- Route the wire to the sound module. Attach the pins to the 2-pole plug supplied and connect the plug to the sound module. Seal the rubber grommet using appropriate sealant.



9

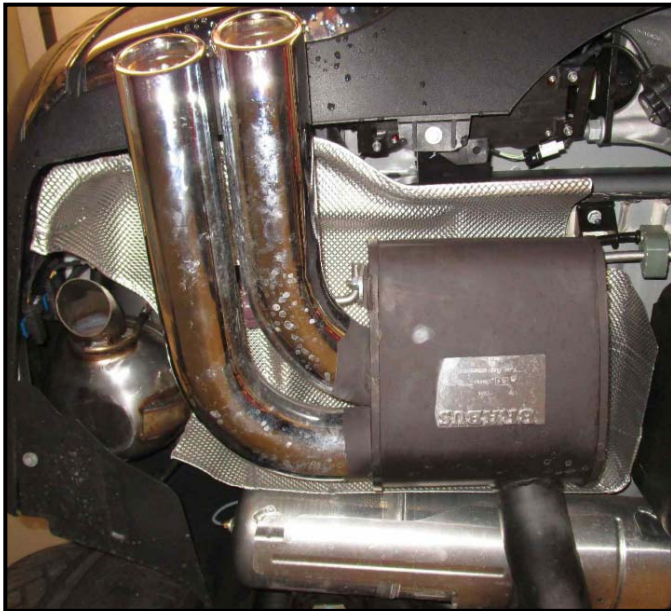


- Re-attach the heat shield.



10

- Re-attach the exhaust system.





- Fixate the control unit to the standard bolt within the boot compartment using lock nut supplied.

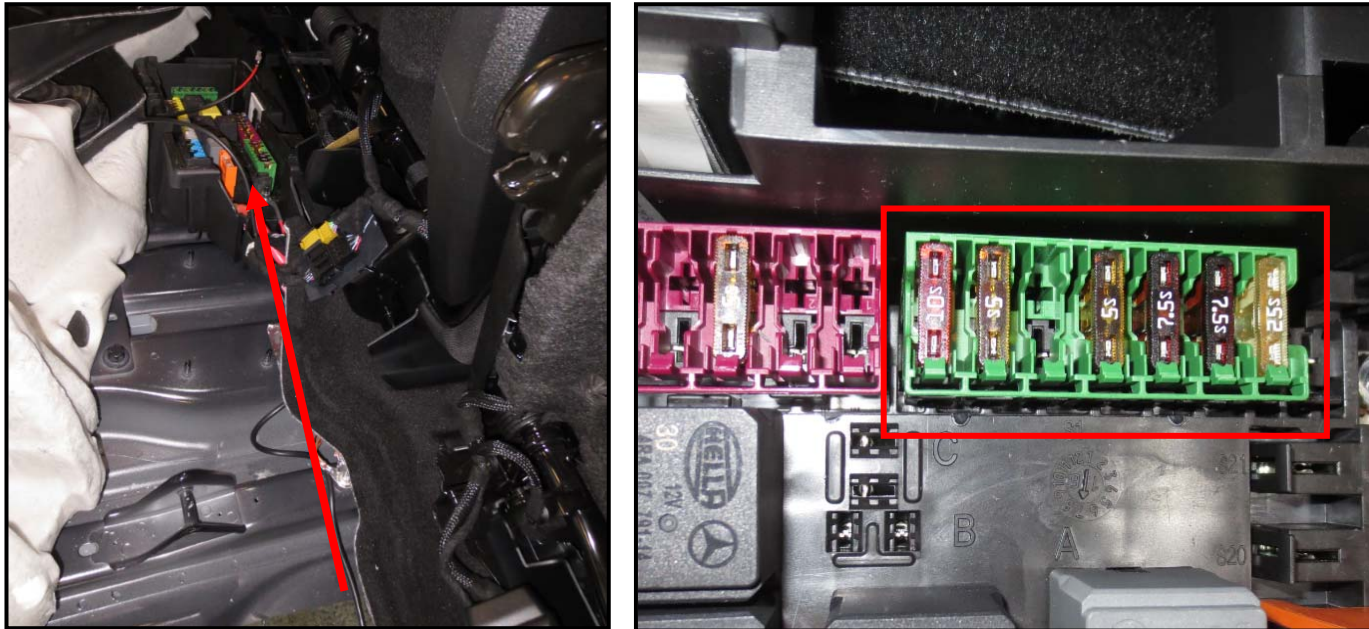


11



- Route the wiring harness to the right vehicle side, fixate it to standard wirings using cable ties.
- Fold up the rear seats to get access to the fuse and relay box below the left rear seat.
- Attach the power supply connector to a free port of the green fuse panel and attach the fuse supplied to the chosen terminal.

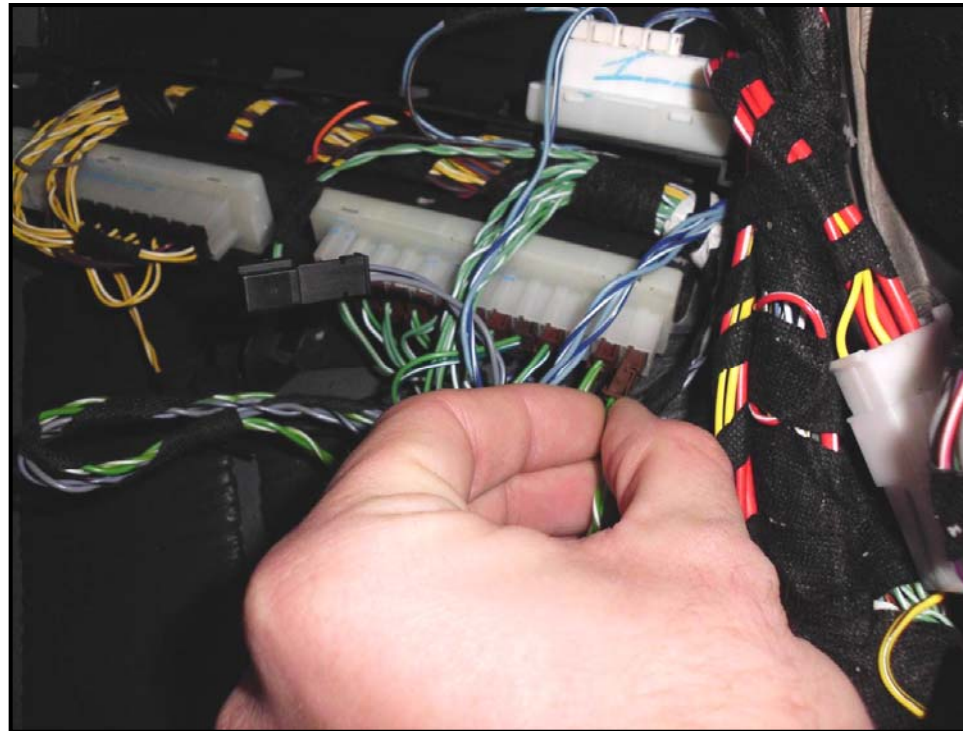
12



- Bolt the ground ring lug to the ground terminal shown within the boot compartment.



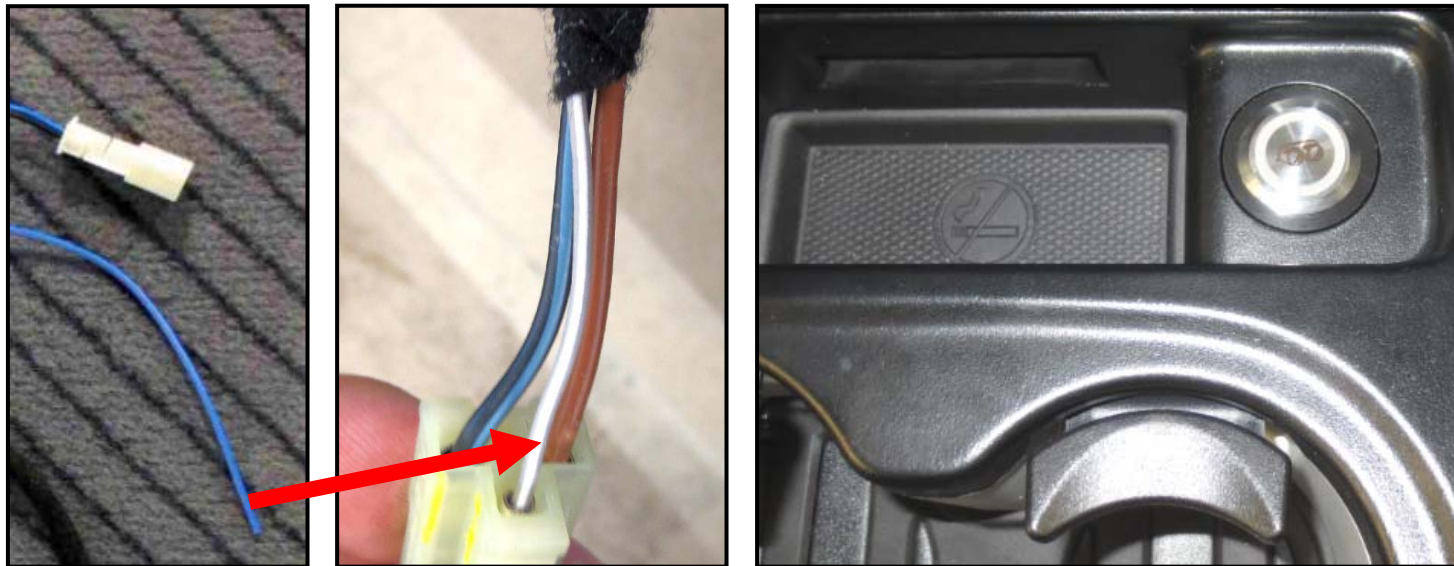
- Route the CAN wires (GN, WH) and the wires for the operation button (BU, BK) frontwards on the right vehicle side (below entrance and pillar-trims).
- The CAN distributor is located in the passenger footwell. Attach the CAN plug of the Brabus harness to a free port of the white CAN distributor shown (wire colours GN-WH & GN). If all ports are used already, solder the wires of the Brabus harness parallel to the wires out of one standard plug.



13



- Route the wires for the operation button (BU, BK) to the center tunnel.
- Disconnect the lead of the 12V plug within the center console and remove the plug using the appropriate tool. Solder the wire BU-GY (illumination) of the Brabus harness to the standard GY-WH wire. Sufficiently isolate the soldered area. Attach the operation button to the assembly area of the 12V socket using the washer supplied. Make sure the lead for the button cannot come into contact to moveable console parts.



- Complete the center console and attach it back to the vehicle.

14



- Attach the fuse to the fuse bracket.
- Start the engine of the vehicle and perform a function-check.

The system is activated by once pushing the button. Per each button push the sound can be changed.

You can choose between the different modes:

- **V6 Sport**
- **V8 Decent**
- **V8 Sport**
- **V8 Race**
- **Standard (sound off)**

15

